

The Ricoh Aficio Color 3131

Aficio Color®



creative
color series



Digital Color Imaging System

RICOH®

When your success depends on

Your Output

You need the RICOH® Aficio® Color 3131 to generate response and inspire action.

This is a powerful color imaging system built to meet the requirements of graphic designers, ad agencies, Print-for-Pay facilities and Central Reprographics Departments. You expect impressive looking and consistently accurate copies, prints, comps and proofs, and the Ricoh Aficio Color 3131 has you covered from start to finish.

- Generate copies and prints with a near continuous-tone appearance, with smooth tonal shifts and solid coverage.
- Produce full-bleed two-page spreads with crop and registration marks on 12" x 18" sheets.
- Seamless integration with both PC and Macintosh operating systems and networks.

Deadlines looming? No problem with the Aficio Color 3131. It has the speed to keep up with your demanding workload.

- 31 ppm in both color and black & white.
- 9.5 second first copy out time.
- True multitasking: simultaneous RIPping and printing/copying.

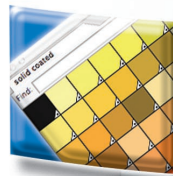
Confidence in Your Color

Whether you're making one or 100 copies/prints, the Ricoh Aficio Color 3131 constantly optimizes the toner density to match the system's temperature and humidity conditions so you get consistently accurate color on every sheet. Are you working on a job with custom colors? Need to see how a job might look if printed with more than four-color process inks? When configured with the optional EFI™ Fiery® controller and its ColorWise® Pro utility, the Ricoh Aficio Color 3131 enables you to:

- Accurately simulate PANTONE® MATCHING SYSTEM colors.
- Download and customize ICC profiles to achieve a specific "look."
- Match a variety of output conditions.



Simulate PANTONE® colors with accuracy and confidence



Use ICC profiles to match an established palette



Produce a variety of media and tools with consistency

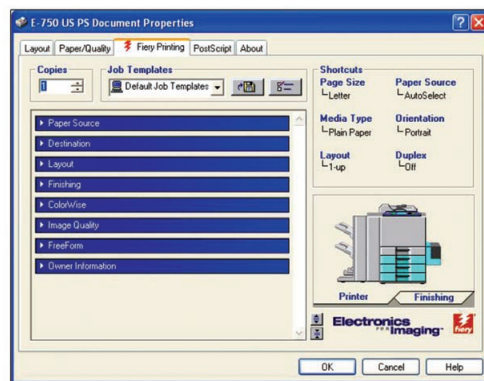
AC3131

Make Your Paper Work Harder

The Ricoh Aficio Color 3131 maximizes the types of jobs that you can produce and minimizes interruptions in your workflow. The Aficio Color 3131 supports a wide array of paper sizes and weights, so you can...

- Output unique brochures and placards on 158 lb index.
- Produce tags and labels as small as 3.9" x 5.8".
- Generate paginated documents and booklets using automatic duplexing.

- ▶ *Print PDF, EPS and PostScript files without launching applications or opening every file.*
- ▶ *Reprint jobs without reRIPing.*
- ▶ *Easily control the print queue priority from any workstation on the network.*
- ▶ *Use Command WorkStation for ultimate production power and versatility.*



Fiery Print Controller Interface

The Finished Line

Outstanding color is essential in your business, but often it's only the first step. When the Ricoh Aficio Color 3131 is configured with an optional on-line finisher, you can complete the job without any manual intervention. It's capable of producing saddle-stitched booklets or traditionally sorted and stapled document sets – all with a single mouse-click.

Set the Standard

The Ricoh Aficio Color 3131 is designed for the most demanding environments. Marketing departments and designers that need accurate color on every print as well as Print-for-Pay and Central Reprographics Departments where speed is of the essence and durability is crucial because every job is a rush job. With copying and scanning capabilities and complete finishing options, it's a complete production system that fits in seamlessly with Macs and PCs alike.

Comprehensive Copying

Copying remains crucial in today's production environment. The Ricoh Aficio Color 3131 provides you with the most advanced copying capabilities available.

- Access to all finishing options right from the operator panel.
- Electronic collation without any additional memory.
- Advanced image editing utilities, overlay, negative, and repeat imaging.

Digital Document Delivery

Besides extensive printing functionality, the Aficio Color 3131 can be configured with network scanning to further leverage your investment.

- Convert hard-copy documents into TIFF or PDF format and send them as e-mail attachments or save them to a file server.
- Digitize photos and graphics for desktop publishing applications such as Adobe® Photoshop® using the TWAIN plug-in.
- Merge scanned documents with others using Command WorkStation and then output the new documents on the Aficio Color 3131.

The Ricoh Aficio Color 3131 Digital Imaging System.

RICOH®

full bleed

full bleed spreads w/crops on 12'' x 18'' sheets

The Ricoh Aficio Color 3131 Digital Imaging System

AC3131

SPECIFICATIONS:

Ricoh Aficio Color 3131 (EDP 411898)

Configuration:	Console
Process:	Dry dual-component
Originals:	Sheet/Book/Object
Maximum Imageable Area:	11" x 17"
Resolution:	Scan: 600 x 600 dpi Print: 600 x 600 dpi
Gradations:	256
Copy Size:	Maximum: 11" x 17" on 12" x 18" Minimum: 3.9" x 5.8"
Paper Sizes:	Cassette: Letter, Legal, Ledger Bypass: 3.9" - 12" L; 5.8" - 18" W
First Copy Out Time (FC/BW):	9.5/9.5 seconds
Copy Speed (FC/BW):	31/31 cpm
Warm-up Time:	Approximately 4 minutes
Multiple Copies:	Up to 999 copies
Paper Capacity:	1,330 sheets standard (2 x 600-sheets + 130-sheet bypass) 2 x 600-sheet optional trays 1,500-sheet LCT Maximum capacity: 4,030 sheets
Paper Weights:	Trays: 17 lb bond - 90 lb index (64 - 163 g/m ²) Bypass Tray: 17 lb bond - 158 lb index (64 - 280 g/m ²) Automatic Duplex Unit: 17 - 28 lb bond (64 - 105 g/m ²)
Reproduction Ratios:	Five Presets: 400%, 200%, 100%, 50%, 25%
Zoom:	25% - 400% in 1% increments
Auto Duplex:	Optional

Advanced Copy Features

Color Mode:	Full-Color, Black & White, Auto Color
Original Selection:	Text/Photo, Text, Photo, Printed Image, Map, Advanced Image Enhancement (optional)
Image Density Adjustment:	Automatic/Manual (11 levels)
Reduce/Enlarge:	Automatic
Shift/Eraser:	Erase Center, Erase border, Erase Center/Border
OHP Slip Sheets:	Yes
Image Color Adjustment:	Automatic
Operation Panel:	Monochrome LCD

Physical Specifications

Dimensions (WxDxH)	34.2" x 29.6" x 39.3" (869 x 752 x 998mm)
Weight:	Approximately 413 lb (187.7kg)
Power Requirements:	115V - 60Hz, 16A

Power Consumption:	2.0 kW maximum
Energy Saving Mode:	Ten modes (3 - 60 minutes)

OPTIONS AND ACCESSORIES:

E-750 Print Controller (EDP 411908)

CPU:	Intel Pentium III 850MHz
Memory (Min./Max.):	256MB/512MB
Hard Disk Drive:	10GB
Printer Languages:	Adobe PostScript 3; PCL 6 emulation
Interface:	10/100BaseTX with RJ-45
Network Protocols:	TCP/IP, Novell IPX/SPX, AppleTalk with auto-switching
Utilities:	Fiery Scan, Fiery Downloader, Fiery WebTools, ColorWise Pro tools, Command WorkStation, FreeForm, DocBuilder Pro (optional)

LCD Panel (EDP 411911)

* Required with E-750 Print Controller

E-850 External Print Controller (EDP 411909)

CPU:	Intel Pentium 4 2GHz
Memory (Min./Max.):	256MB/768MB
Hard Disk Drive:	60GB
Printer Languages:	Adobe PostScript 3; PCL 6 emulation
Interface:	10/100BaseTX with RJ-45
Network Protocols:	TCP/IP, Novell IPX/SPX, AppleTalk with auto-switching
Utilities:	Fiery Scan, Fiery Downloader, Fiery WebTools, ColorWise Pro tools, Command WorkStation, FreeForm, DocBuilder Pro

Video Interface (EDP 411910)

* Required with E-850 Print Controller

DF81 Reversing Automatic Document Feeder (EDP 411900)

Number of Originals:	50 sheets
Feeder Speed:	25 opm
Paper Sizes:	Letter, Legal, Ledger (A3 - A5)
Paper Weights:	17 - 28 lb bond (64 - 105 g/m ²)

Platen Cover (EDP 411899)

AD470 Automatic Duplex Tray (EDP 411903)

Type:	Modular/Cassette type (first slot only)
Paper Sizes:	Letter, Legal, Ledger (A3 - A5)
Paper Weights:	17 - 28 lb bond (64 - 105 g/m ²)
Capacity:	30 sheets

RT47 Large Capacity Feeder (EDP 411902)

Paper Size:	Letter/Ledger
Paper Weights:	17 lb bond - 90 lb index (64 - 163 g/m ²)
Capacity:	1,500 sheets

PS570 Paper Drawer (EDP 411901)

Paper Sizes:	Letter, Legal, Ledger (A3 - A5)
Paper Weights:	17 lb bond - 90 lb index (64 - 163 g/m ²)
Capacity:	600 sheets

Slot Cover (EDP 411907)

SR930 Multi-Tray Finisher (EDP 411904)

Paper Sizes:	Letter, Legal, Ledger (A3 - A5)
Paper Weights:	17 lb bond - 158 lb index (64 - 280 g/m ²)
Stack Capacity:	50 sheets (letter); 30 sheets (legal, ledger)
Staple Capacity:	50 sheets (letter); 30 sheets (legal, ledger)
Staple Positions:	Front, Rear, Rear Diagonal, Double
Punch:	Optional (2 or 3 holes)

SR940 Booklet Finisher (EDP 411905)

Paper Sizes:	Letter, Legal, Ledger (A3 - A5)
Paper Weights:	17 lb bond - 140 lb index (64 - 280 g/m ²)
Stitching Capacity:	Up to 15 sheets
Stack Capacity:	50 sheets (letter); 30 sheets (legal, ledger)
Staple Capacity:	50 sheets (letter); 30 sheets (legal, ledger)
Staple Positions:	1 staple: 3 positions (Front, Rear, Rear Diagonal) 2 staples: 1 position
Punch:	Optional (2 or 3 holes)

Punch (EDP 411906)

* For both SR930 and SR940 finishers

SUPPLIES:

Black Toner (EDP 411912)

Cyan Toner (EDP 411915)

Yellow Toner (EDP 411913)

Magenta Toner (EDP 411914)

SR930 Staples (EDP 411916)

SR940 Staples (EDP 411917)

Print speed may be affected by network, application or PC performance. Specifications and external appearance are subject to change without notice. Products are shown with optional features. For maximum performance and yield, we recommend using genuine Ricoh parts and supplies.

RICOH®
Image Communication

Ricoh Corporation, Five Dedrick Place, West Caldwell, NJ 07006
Phone: (973) 882-2000 • Web Site: <http://www.ricoh-usa.com>

Windows® and Windows® 95/98/Me/NT4.0/2000/XP/Server 2003 are registered trademarks of Microsoft Corporation. Macintosh®, Mac® OS and AppleTalk® are registered trademarks of Apple Computer, Inc. Adobe® and PostScript® are registered trademarks of Adobe Systems, Inc. PCL® is a registered trademark of Hewlett-Packard Company. Ricoh® and Aficio® are registered trademarks of Ricoh Company, Ltd. RPCS™, SmartDeviceMonitor™ and DeskTopBinder™ are trademarks of Ricoh Company, Ltd. All other trademarks are the property of their respective owners.

♻️ Printed in U.S.A. on recycled paper because Ricoh cares.



CA-0426